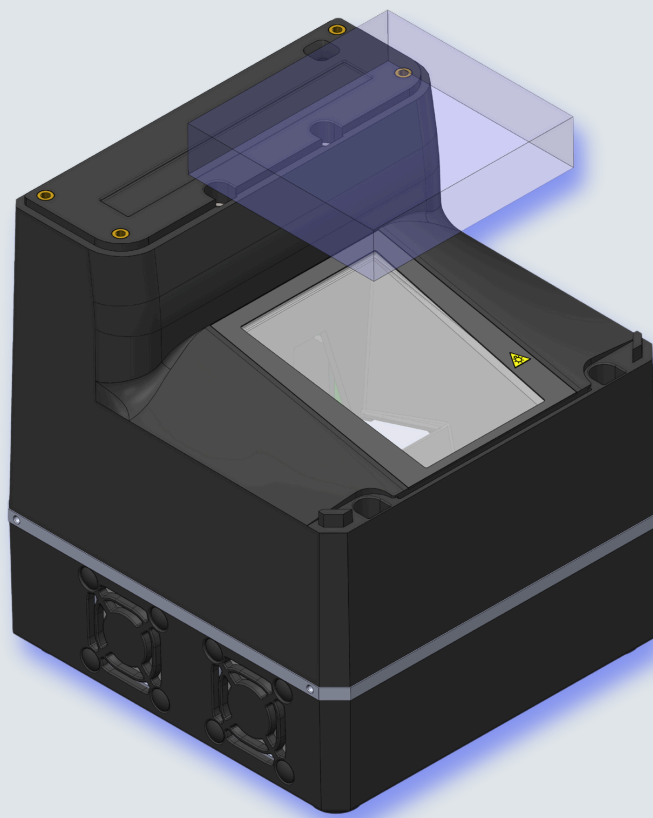


BTM-ANA

INDUSTRIAL 3D SCANNER



Precision Quality Control with Bluelynes® Technology

IDloop's BTM-ANA | Designed for versatility, our industrial 3D scanner is the perfect solution for surface inspection, reverse engineering, inline and offline quality control, position control, and scratch and dent analysis. Whether ensuring flawless product surfaces, capturing precise 3D models for redesign, or detecting the smallest defects in manufacturing, BTM-ANA delivers unmatched accuracy and speed. This system is ideal for industries where precision is critical, including aerospace, automotive, electronics, and advanced manufacturing.

- ✓ COMPACT, SEAMLESS INTEGRABLE DESIGN
- ✓ RAPID, HIGH-RESOLUTION SCANNING AT MICRO-LEVEL ACCURACY
- ✓ LARGE MEASUREMENT AREA

BTM-ANA Technical Data

DATA ACQUISITION

Principle	Structured light
Light Source	Blue LED
Middle field of view	81.3 mm x 76.2 mm
Measurement range in z-direction	40 mm
Standoff distance	27 mm from the highest point of device 73mm from glass measurement area
Depth Resolution (z)	6 μ m
Point to point distance (x,y)	33 μ m
Max. points per 3D point cloud	8.1 M
Data Acquisition time	0.1 s to 4 s, depending on scan mode
Export 3D data	~ 1 s

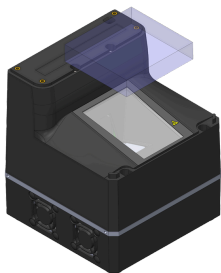
HARDWARE

Ingress Protection	IP54
Operating Conditions	Temperature: -10°C to 55°C Humidity: 10% to 80% (non-condensing)
Storage Temperature	-40°C to 80°C
Dimensions (W x D x H)	152 mm x 152 mm x 175 mm
Weight	2.55 kg
Scanner Interface	USB 3.0
Power Supply	12 V DC, 5A, External power supply

SOFTWARE

Supported Operating System	Windows 10/11 (64-bit)
Software	Bluelynes Capture App
Data Output	3D information: point cloud (.ply), depth map 2D information: grey image
API Interface	TCP/IP, IPv6

ACCESSORIES INCLUDED



Scope of Delivery

- BTM-ANA 3D Scanning Device
- Power Supply
- USB cable
- Bluelynes Capture App

Additional Options

- Cover designed to ensure accurate measurement at the correct working distance
- Individual sample platforms
- Customized analysis tools

